

Included Amenities

Community

- Membership to Covil Estates amenities: pool, tennis, playground, community building
- Underground services by Progress Energy, BellSouth, Time Warner Cable
- Natural gas available through NCNG
- County Sanitary Sewer
- City Water
- Above ground storm water management system
- Convenient to Wrightsville Beach, Mayfaire, I-40 and Ogden Park

Architectural Design

- Superior floorplans
- First floor master suite with additional secondary bedroom down
- Large rooms and closets
- Over 300 square feet of walk-in storage in the "Moore's Creek" Plan
- Pull down for attic storage in the "Covil" Plan

Appliances

- Kenmore Stainless Microwave Model # 22-80593
- Kenmore Stainless Dishwasher Model # 22-17013
- Kenmore Stainless Range Model # 22-96113
- Disposal

Cabinets and Tops

- Selections by DuroCraft Cabinets
- Granite countertops with tile backsplash
- Undermount double compartment stainless steel sink
- Bartop for seating up to 4 persons
- Raised vanities (36") in all baths with cultured marble tops
- Solid surface tops available as an option

Energy Systems

- 13 Seer Lennox heat pumps
- Dual zones—2 complete systems
- Vented range exhausts to outside

Floor Coverings

- Hardwood standard in living room, foyer, sunroom, kitchen, dining
- Ceramic standard in all baths and laundry
- Carpeted bedrooms, stairs, hallways

Windows and Doors

- Insulated double pane single hung windows on 1st floor and insulated double hung windows for easy cleaning on 2nd floor all with fiberglass screens
- Fiberglass front door with insulated double pane sidelite
- Metal door from house to garage
- Metal garage door with carriage house look with glass windows and electric opener included with 2 remotes and exterior keypad
- Solid vinyl sliding glass door from sunroom and master bedroom to deck with insulated and tempered double pane glass

Landscaping

- Sodded and irrigated front, side and rear yards with pine straw accents and foundation shrubs
- 6' privacy fencing around rear yard

Exterior Details

- Oversized brick - 6 selections to choose from
- Elk 30 year Architectural Shingles
- Vinyl shakes, accents in gables
- Maintenance-free vinyl soffits and boxing
- Fiberglass columns on front porch
- Treated wood decks with rails or built-in seating
- Mahogany front porch ceiling

Interior Details

- 2 Car finished & painted garage with wall of pegboard for tool storage
- See-thru vented fireplace from living room to sunroom with custom built mantles and surrounds with slate facing and hearths with gas logs. Granite, marble and tile optional
- 9' First floor ceilings, smooth finish, 8' second floor ceilings, smooth finish
- 2 Piece crown molding in all downstairs rooms (except closets & laundry)
- 7-1/4" Base and 3-1/4 casing throughout
- Beveled mirrors in all baths
- Custom wainscoting in dining room
- Ventilated vinyl coated wire shelving in all closets
- Smooth skin 6 panel interior doors
- Satin finish chrome bath hardware
- Tile backsplash in kitchen
- Satin chrome door hardware with lever handles
- 5 Phone outlets
- 5 Cable outlets

Plumbing

- Chrome satin finish Proflow valves and trims in baths and kitchen
- 50 Gallon hot water heater
- 2 Exterior water faucets
- Fiberglass tub shower in hall guest baths
- Fiberglass whirlpool in master bath
- Oversized ceramic tile shower in master bath with dual controls
- Glass enclosure with door on master shower
- Stainless steel double compartment undermount sink in kitchen
- Elongated China toilets
- Ice maker connection in kitchen

Lighting

- Flood lights, front and rear
- Extensive recessed lighting
- Fashionable standard package
- Upgrades available

Safety Features

- Pre-wired for monitored security system
- Deadbolts on all swinging exterior doors
- Security Bolton sliding glass doors
- Battery backup smoke detectors





THE COVIL PLAN



Heated Square Feet
 1983
 160 Sunroom
 322 Bonus Room
 2465 Total



THE AIRLIE PLAN

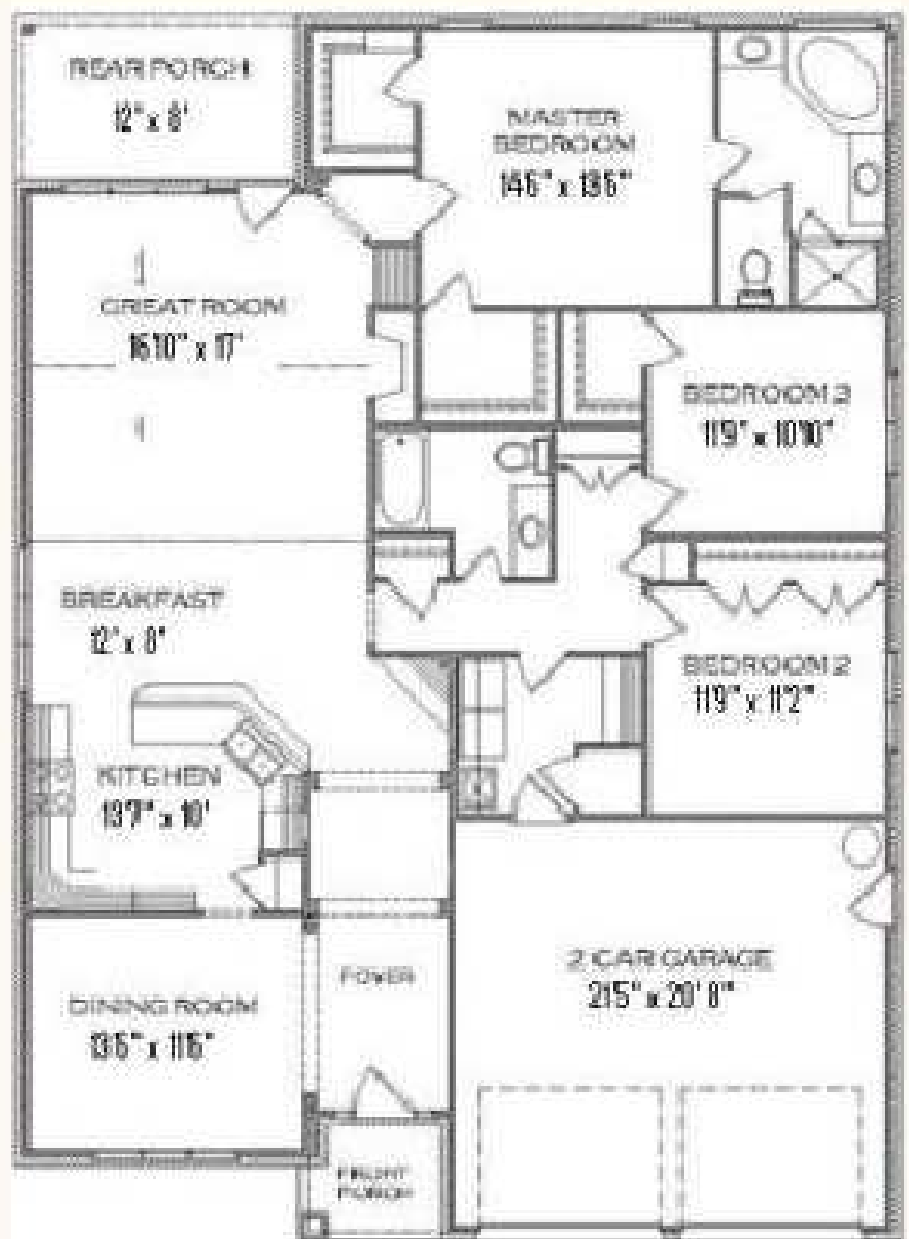
Heated Square Feet

1912

115 Sunroom

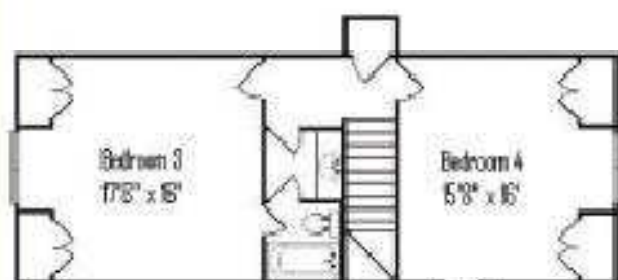
320 Bonus Room

2347 Total





THE MOORES CREEK PLAN



Heated Square Feet
2800
306 Bonus Room
3106 Total

