



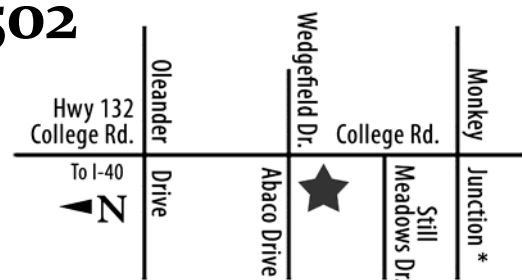
Townhomes starting at **\$119,900**
by Wilmington's #1 home builder!

- 2 & 3 bedroom townhomes with a Caribbean charm and low maintenance lifestyle
- All townhomes are Stevens Energy Wise for greater energy efficiency and savings
- Located off College Road near area beaches, marinas and historic downtown Wilmington

Furnished Model Home:
4544 Exuma Lane, Wilmington, NC 28409

For more information please call

(910) 332-8502



www.SaylorsWatchNC.com



Available Plans	Heated Sq. Ft	Price
2 Bedroom Interior Unit	1,056	\$ 119,900
3 Bedroom Interior Unit	1,376	\$ 129,900
3 Bedroom End Unit - Right	1,376	\$ 134,900
3 Bedroom End Unit - Left	1,376	\$ 134,900

Prices and plans are subject to change without notice.





EXTERIOR FEATURES

- ◆ Craftsman style exterior
- ◆ 25 year roof shingles
- ◆ Double pane vinyl windows
- ◆ Landscaping package includes sodded front yard
- ◆ Rear concrete patio

INTERIOR FEATURES

- ◆ Schlage® door knobs and deadbolts on outside doors
- ◆ Engineered hardwood floors in foyer
- ◆ Vinyl floors in all bathrooms
- ◆ Vinyl floors in kitchen, breakfast nook and laundry room
- ◆ Stain resistant carpet with 6 lb pad in great room, dining room, bedrooms, stairway and bonus room
- ◆ Smooth painted ceilings and walls
- ◆ Chrome finishes on plumbing fixtures, bath accessories and hardware
- ◆ Lighting package includes chrome finishes
- ◆ Smoke detectors installed in all bedrooms and living areas
- ◆ Vented closet shelving
- ◆ White ceiling fans in master bedroom and great room
- ◆ Additional bedrooms wired for ceiling fan with switch
- ◆ Phone jacks in kitchen and bedrooms
- ◆ Cable TV wired in living room and bedrooms
- ◆ Composite panel front door
- ◆ Choice of three interior door styles
- ◆ 3 1/4" base molding
- ◆ 2" casing on doors and windows

KITCHEN FEATURES

- ◆ Laminate countertops
- ◆ Markraft *American Dream series* Beech or Oak wood cabinets; no knobs, no shoe or crown molding
- ◆ Moen® plumbing faucets
- ◆ GE® White or Black Appliance package
- ◆ GE smooth top, self cleaning range
- ◆ GE *Energy Star* dishwasher
- ◆ GE Spacemaker microwave
- ◆ Garbage Disposal

BATHROOM FEATURES

- ◆ Tub/shower combo in all baths
- ◆ Single bowl vanity in all baths
- ◆ Exhaust fans in all baths
- ◆ Elongated toilets

ENERGY SAVING FEATURES

- ◆ 50 gallon hot water heater
- ◆ 13 SEER heat pump
- ◆ R38 insulation in ceilings
- ◆ R15 insulation in walls

Included features are subject to change without notice.

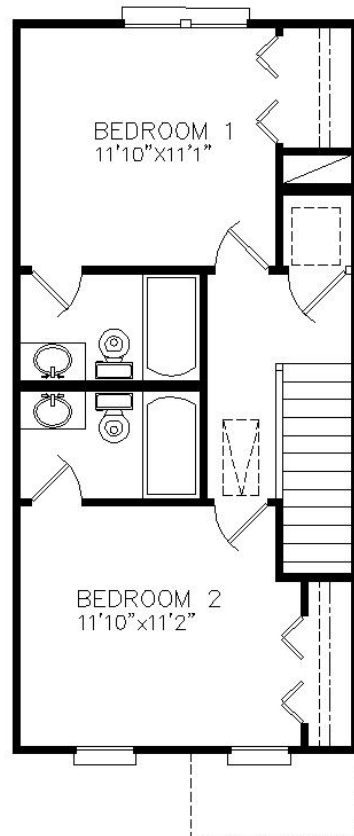


THE CAISON

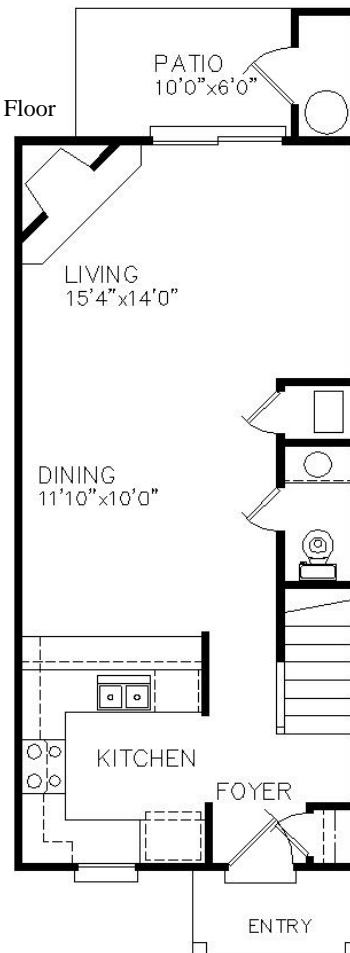
1,056 Sq. Ft. 2 BEDROOMS



Second Floor



First Floor



Shown with optional fireplace. Dimensions are approximate. Pricing and plans subject to change without notice.



THE BERTRAM

1,376 SQ. FT. 3 BEDROOMS



Shown with optional fireplace. Dimensions are approximate. Pricing and plans subject to change without notice.



THE BERTRAM

1,376 SQ. FT. 3 BEDROOMS - RIGHT END

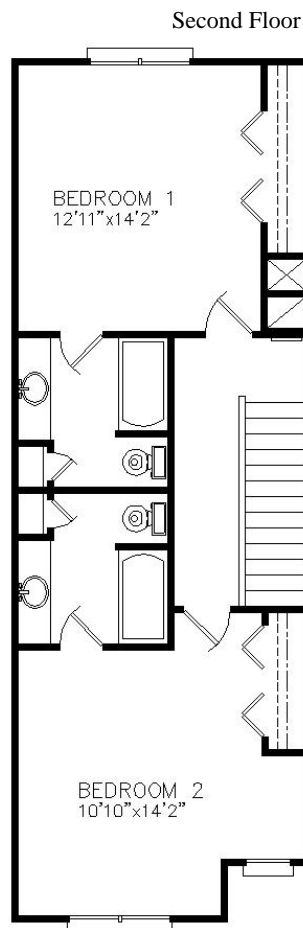


Shown with optional fireplace. Dimensions are approximate. Pricing and plans subject to change without notice.



THE BERTRAM

1,376 SQ. FT. 3 BEDROOMS - LEFT END



Shown with optional fireplace. Dimensions are approximate. Pricing and plans subject to change without notice.



