



Welcome to Tall Ships Landing, a new home community located off Myrtle Grove Road. A wonderful neighborhood nestled among the landscape of the Southern coasts' most treasured trees and just off the Intracoastal Waterway. This neighborhood offers large lots, beautiful natural areas and eleven floor plans

beginning in the low \$200,000s.

Close to Monkey Junction and within 10 minutes of Carolina Beach, you can easily find all your living needs nearby. If you would like a new home with more private outdoor living space with a lovely backdrop of live oaks and a serene setting, this is the place for you!

Directions:

South on College Road towards Monkey Junction. Take a left on Piner Road then right on Myrtle Grove Road. Neighborhood will be on your left.

**For more information contact
Keith Beatty @ 910.509.1924 or 910.232.4503.**



Danforth Plan



Ashton Plan



Jefferson Plan

Building by:





Available Plans	Square Feet	Price
The Georgia	1,985	\$230,900
The Jefferson	2,172	\$221,900
The Ashton	2,241	\$225,400
The Danforth	2,245	\$226,400
The Newbridge	2,488	\$239,900
The Morehead	2,670	\$249,900
The Savannah	2,700	\$249,900
The Live Oak	2,644	\$259,900
The Grand Newbridge	2,850	\$259,900
The Savannah w/downstairs master suite	3,000	\$279,900
The Grand Savannah	3,401	\$299,900

Keith Beatty - Listing Agent

Call for more information:

Office: 910.509.1924

Mobile: 910.232.4503

www.wilmingtonNChomefinder.com

Keith Beatty
NEW HOME
 SALES & MARKETING


Intracoastal
 REALTY CORPORATION
Experience the Exceptional



Inventory as of April 5, 2012

1641 Tall Ships Lane (Lot 7) 4 Bed, 2.5 Baths

2811 Sqft \$275,000

This Charleston-style Savannah Plan by Blanton Builders is a spectacular custom home. Features include multiple porches, a spacious master suite, formal dining + a breakfast room, designer kitchen with granite counter tops and stainless steel appliances, a study and finished attic space.

1652 Tall Ships Lane (Lot 27) 4 Bed, 2.5 Baths

2644 Sqft \$269,900

The Live Oak floor plan by Hardison Building Company is a unique 4 bedroom plan. The home offers a spacious kitchen, mudroom, granite countertops, a fireplace and upstairs master suite with separate soaking tub and large walk-in closet.

1744 Tall Mast Court (Lot 16) 4 Bed, 3 Baths

2850 Sqft \$275,000

Quality construction by Blanton Builders, Inc in Tall Ships Landing - tucked away in a peaceful, serene setting. This gorgeous home boasts a downstairs master suite and a designer kitchen with center island, granite countertops, stainless steel appliances and a breakfast room. A second bedroom is located downstairs, 2 additional bedrooms and a bonus room are located upstairs. Ample closet space and a 2 car garage complete this beautiful home.

1708 Tall Mast Court (Lot 22) 4 Bed, 4 Baths

2905 Sqft \$399,500

This one of a kind Banks Channel plan by Hardison Building Company won't last long. Enjoy peaceful evenings on the back porch overlooking the Intracoastal Waterway while surrounded by mature oak trees. This home includes an abundance of features including an elevator, a large kitchen island, a large master suite with back porch access and a garden tub, granite countertops, stainless steel appliances, a home office, and so much more! Each bedroom has its own personal bathroom and the home is complete with large amounts of storage space.

1704 Tall Mast Court (Lot 23) 4 Bed, 3 Baths

3117 Sqft \$429,900

Very spacious, unique plan by Blanton Building Inc. - one of a kind in the community. Relax on your back porch and enjoy spectacular views of the Intracoastal Waterway! Home features include a designer kitchen with granite counter tops, stainless steel appliances, large pantry, formal dining and breakfast room, multiple porches and ample storage space.

Keith Beatty - Listing Agent

Call for more information:

Office: 910.509.1924

Mobile: 910.232.4503

www.wilmingtonNChomefinder.com

Keith Beatty
NEW HOME
SALES & MARKETING


Intracoastal
REALTY CORPORATION
Experience the Exceptional



STANDARD FEATURES

EXTERIORS

- ◆ 30 year architectural shingles
- ◆ Low maintenance vinyl siding
- ◆ Vinyl tilt windows with screens
- ◆ 120 square foot patio in rear, walkway in front
- ◆ Double car concrete driveway
- ◆ 2 Flood lights
- ◆ 2-Car finished sheetrock and painted garage
- ◆ Landscaping package includes sodded front yard and seeded side and rear yards
- ◆ Covered front porch
- ◆ Shutters on front elevation
- ◆ 2 Exterior hosebibs
- ◆ Stone or brick accents

INTERIORS

- ◆ Laminate floors in foyer, vinyl floors in kitchen, breakfast nook, bathrooms and laundry
- ◆ Stain resistant carpet with 8 lb pad in bedrooms, stairway, great room, dining room and bonus room
- ◆ Smooth painted ceilings and walls
- ◆ Vault or tray ceiling in master bedroom (per plan)
- ◆ Brushed chrome finishes on hardware
- ◆ Composite 6-panel front door
- ◆ Schlage® doorknobs and deadbolts on front and rear doors
- ◆ 2-panel interior doors
- ◆ Sliding back door or full view glass door
- ◆ Vented closet shelving
- ◆ Ceiling fans in master bedroom, great room and pre-wired in other bedrooms and bonus room
- ◆ Phone jacks in kitchen, all bedrooms and bonus room
- ◆ Cable TV wired in living room, all bedrooms and bonus room
- ◆ Optional security system with one motion detector and keypad
- ◆ 4 1/2" base molding
- ◆ 2 1/4" casing on doors and windows
- ◆ Low E vinyl windows

KITCHEN

- ◆ Laminate countertops
- ◆ 42" cabinets
- ◆ Stain finish on cabinetry
- ◆ Moen® plumbing faucets
- ◆ Recessed icemaker water line connection
- ◆ Pantry (per plan)
- ◆ Stainless steel GE® smooth top, self cleaning range
- ◆ Stainless steel GE® dishwasher
- ◆ Stainless steel GE® microwave
- ◆ Garbage disposal

BATHROOMS

- ◆ Shower and separate soaker tub in master bath
- ◆ Optional glass shower door in master bath
- ◆ Raised double vanity bowl in master bath
- ◆ Designer brushed chrome plumbing fixtures
- ◆ Obscured glass fixed window over soaker tub in master bath
- ◆ Elongated toilets

ENERGY SAVING FEATURES

- ◆ 50 gallon hot water heater
- ◆ 13 seer Carrier® heat pump
- ◆ 200 amp electrical service
- ◆ R30 insulation in ceilings
- ◆ R13 insulation in walls
- ◆ GFI receptacles to meet code

ASSURANCE OF QUALITY AND SERVICE

- ◆ Pre-closing walk-through with builder
- ◆ 10 Year structural and 1 year interior warranties

INCLUDED FEATURES ARE SUBJECT TO CHANGE WITHOUT NOTICE
APPROVED MARCH 2011

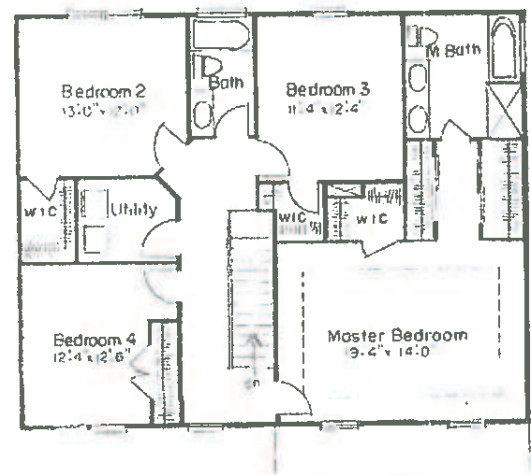
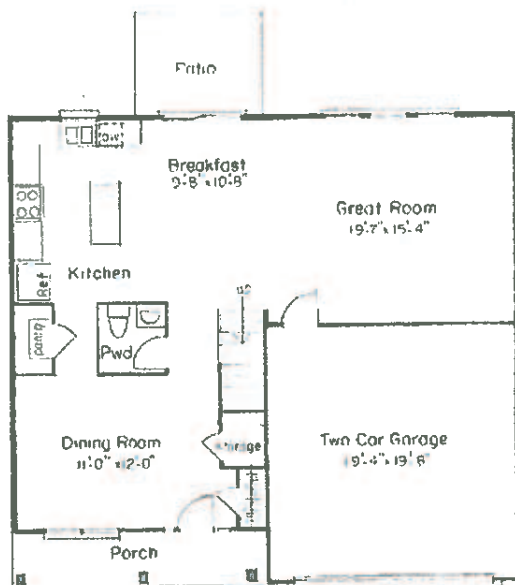
For more information please call Keith Beatty

Office: 910.509.1924

Mobile: 910.232.4503



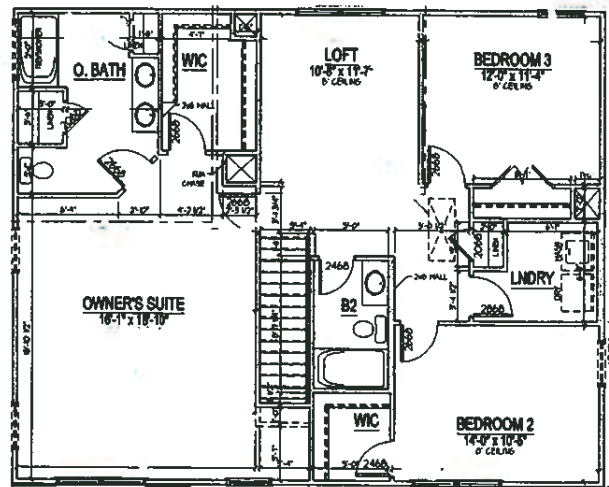
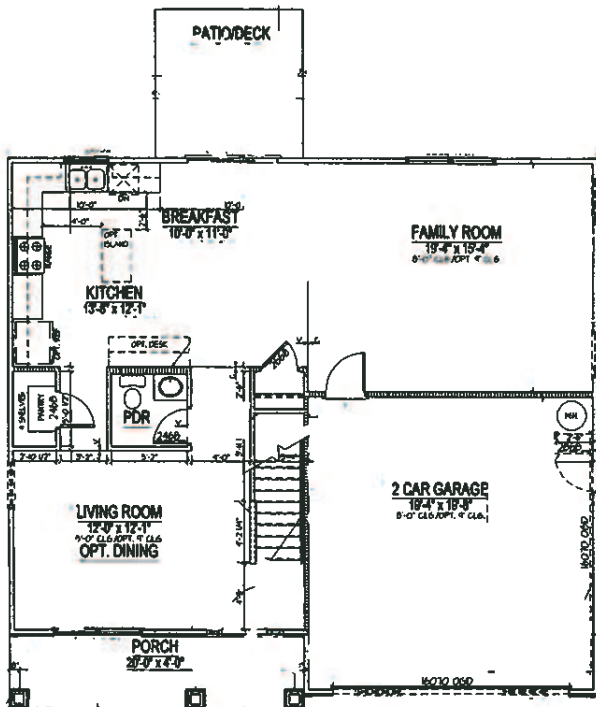
The Ashton 2241 Sq Ft

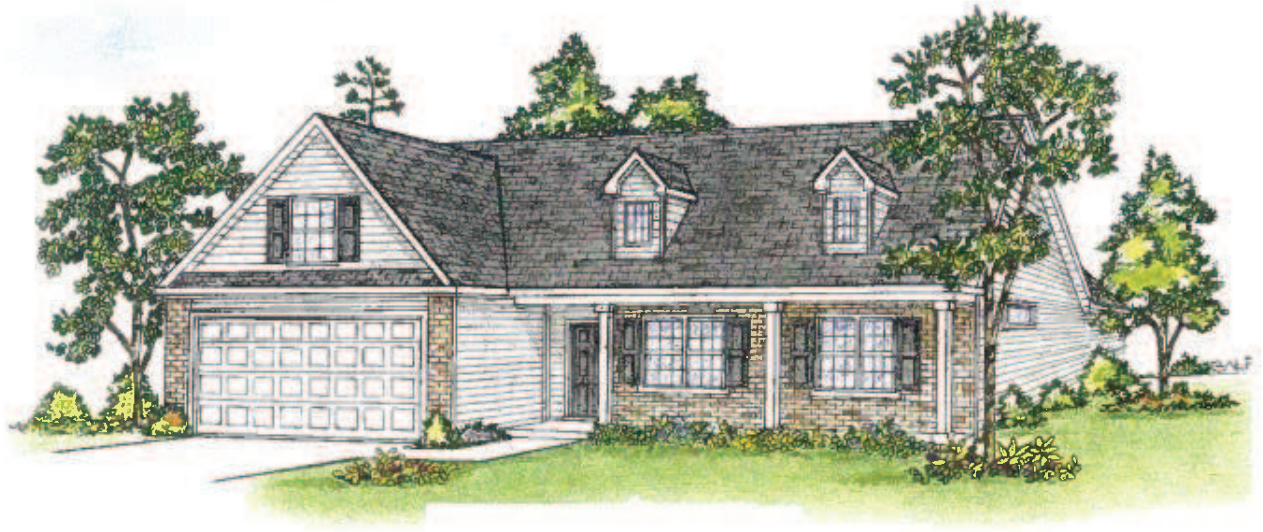


All square footage and dimensions are approximate and vary per individual house

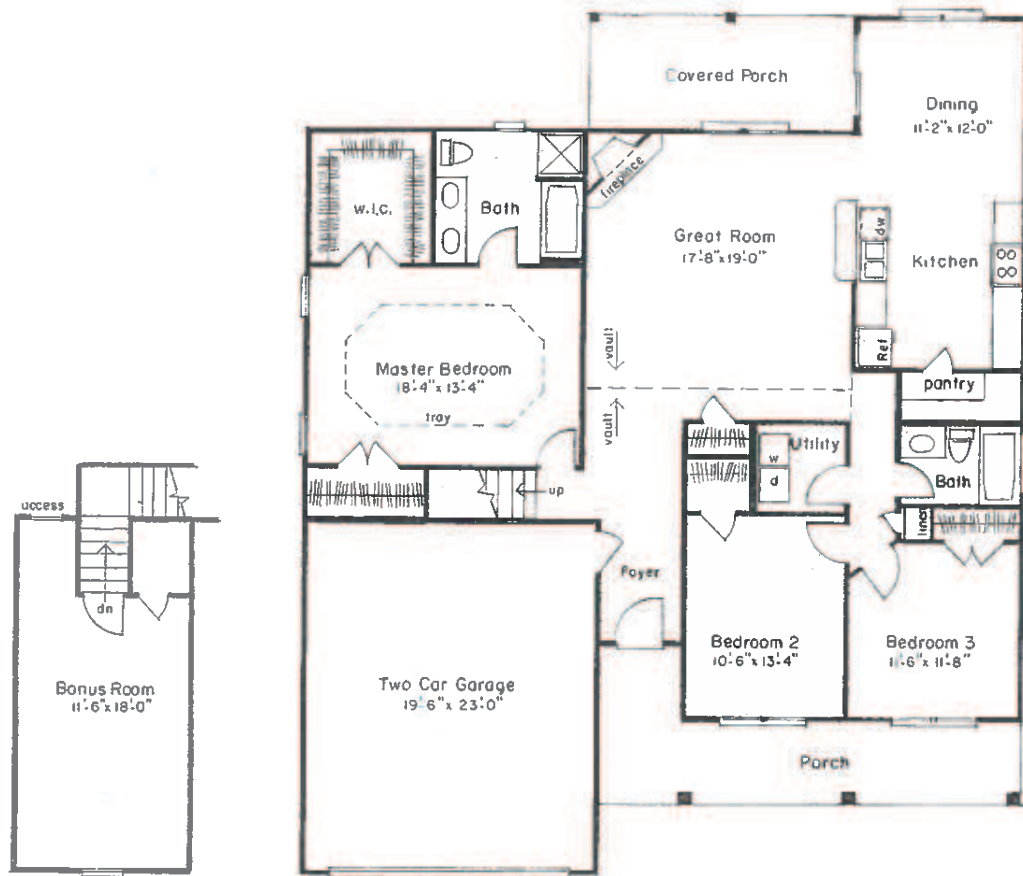


The Danforth
2245 Sq Ft





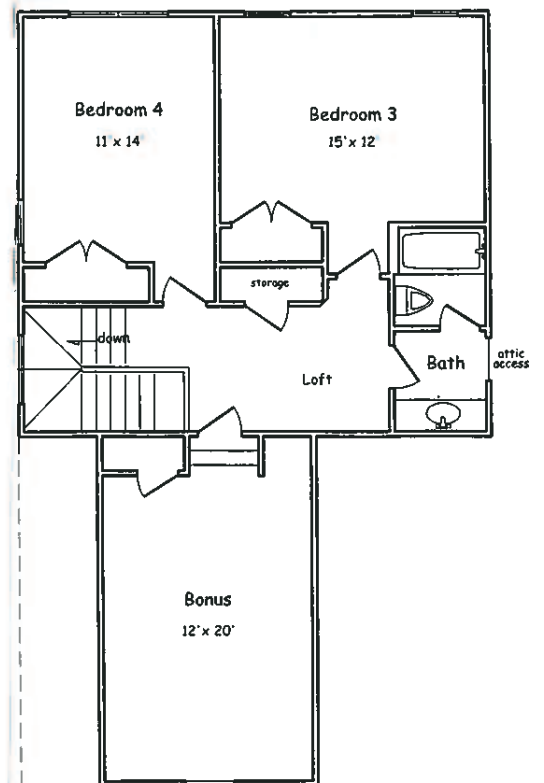
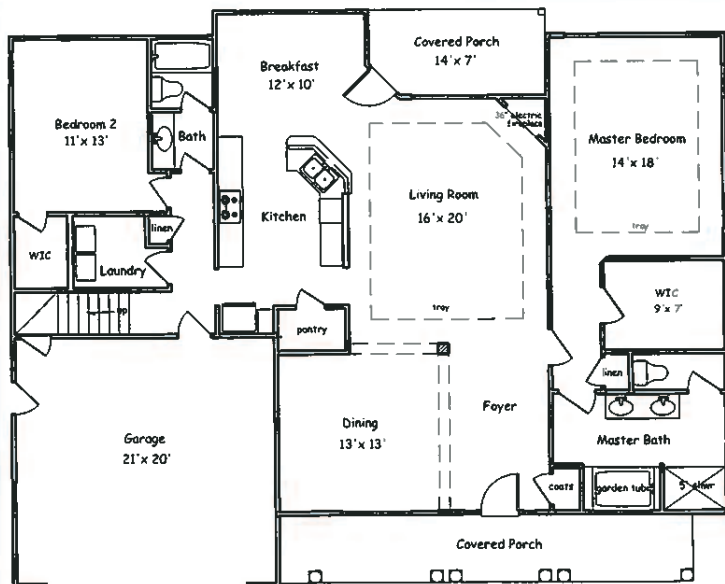
The Georgia 1985 Sq Ft





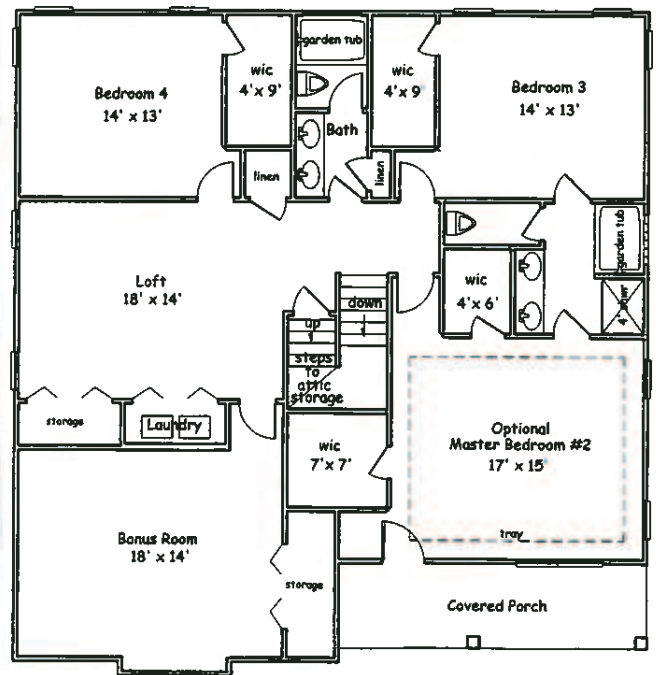
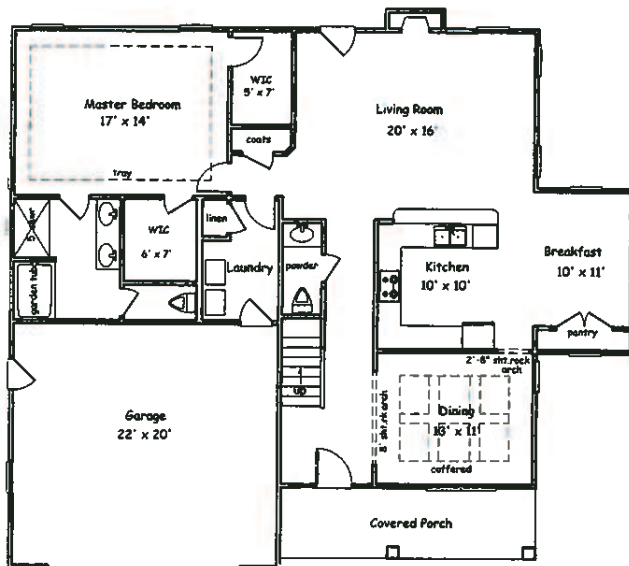
The Grand Newbridge

2850 Sq Ft





The Grand Savannah 3401 Sq Ft



2nd Floor



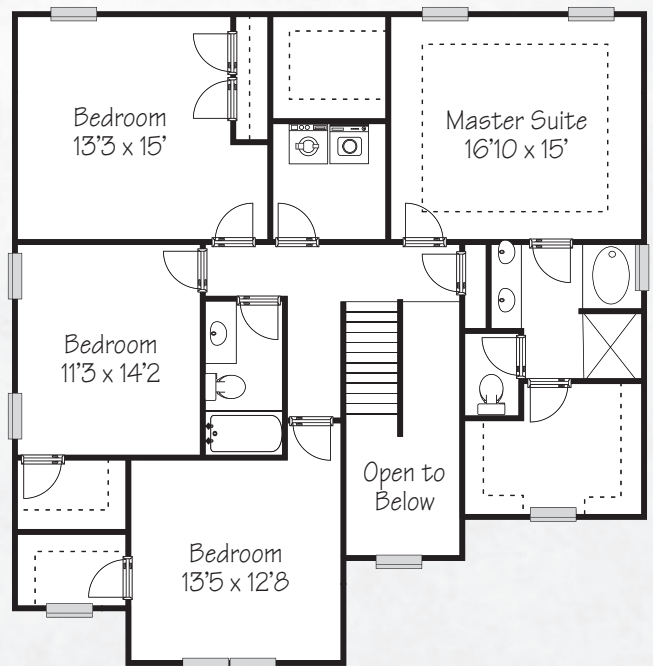
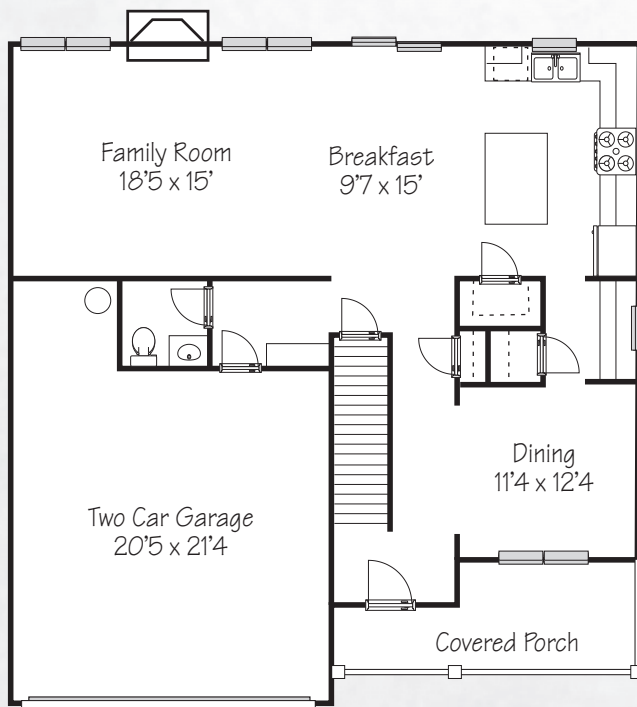
The Jefferson 2172 Sq Ft





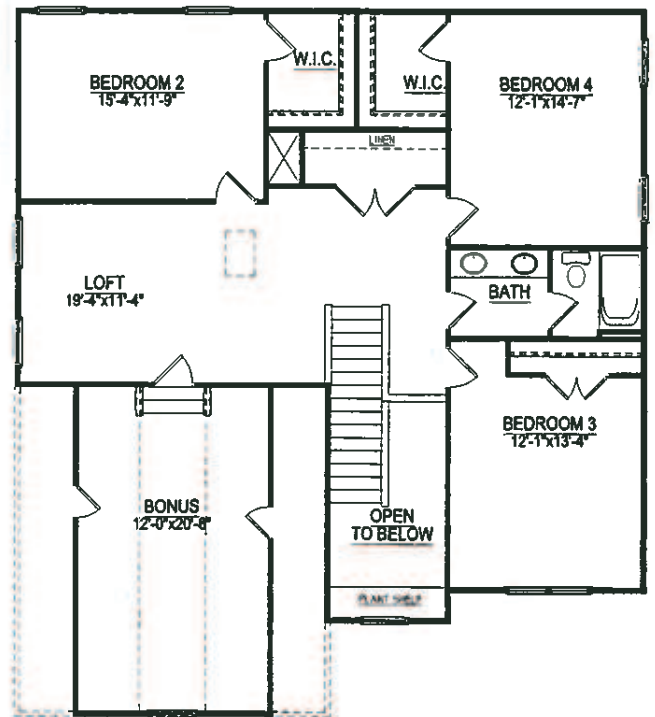
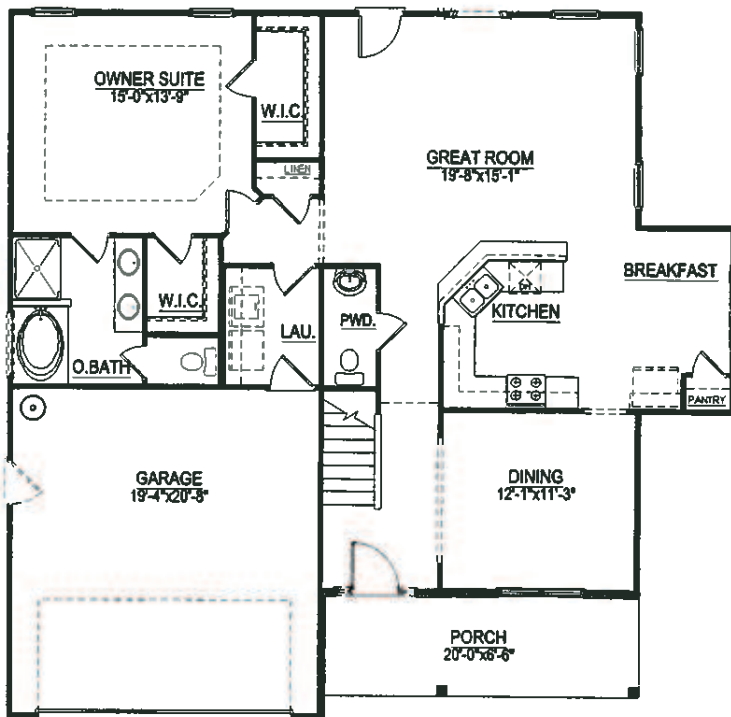
THE LIVE OAK

2644 total heated sq. ft.





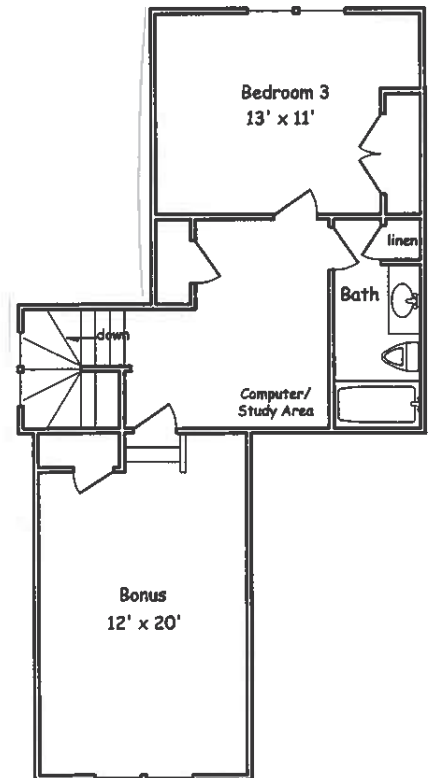
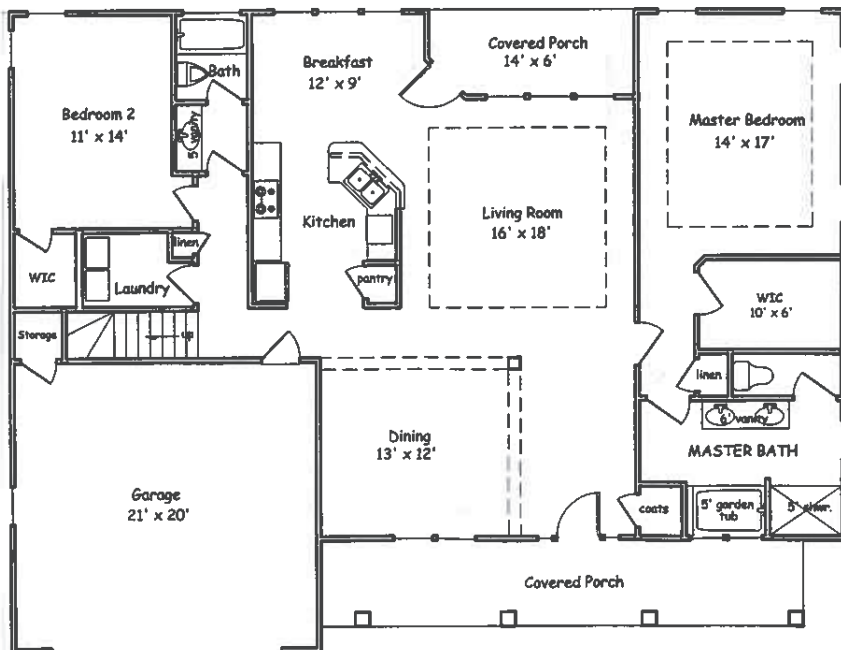
The Morehead
2670 Sq Ft





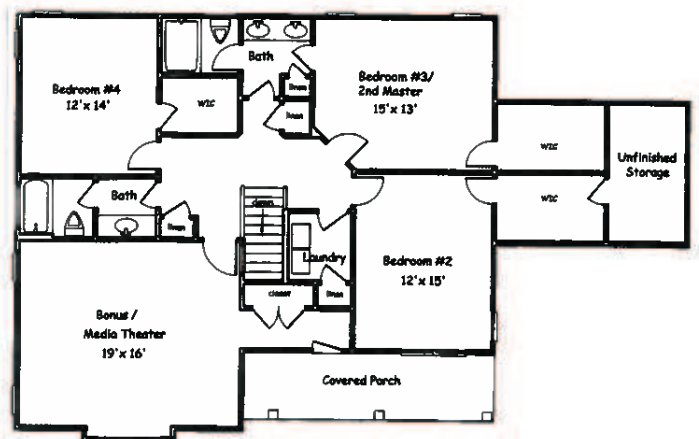
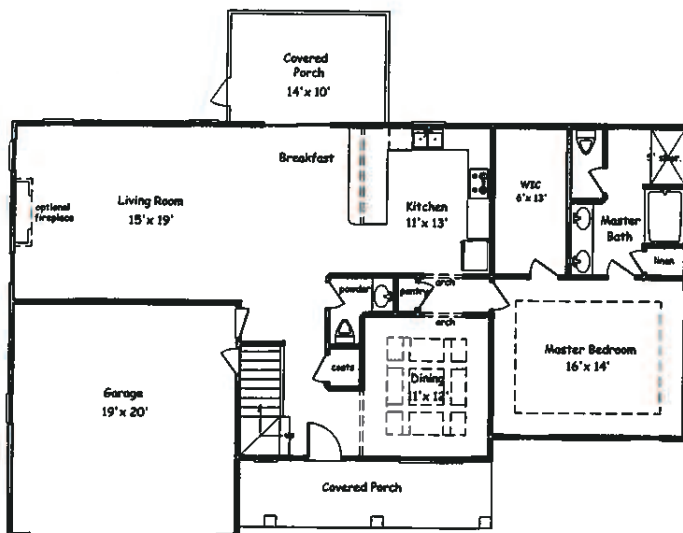
The Newbridge

2488 Sq Ft



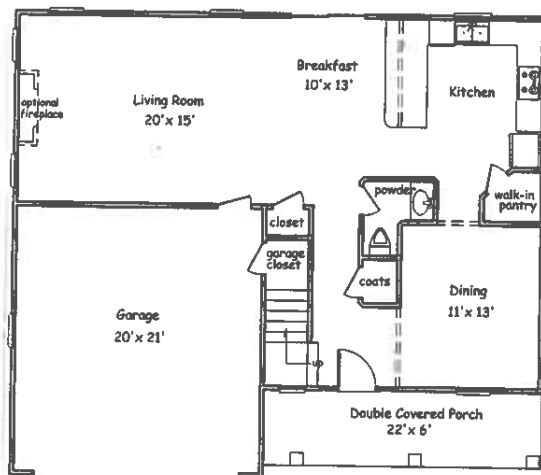


The Savannah w/downstairs master suite 3000 Sq Ft

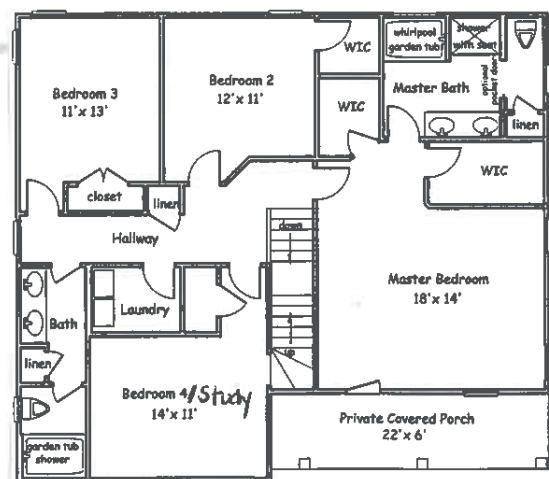




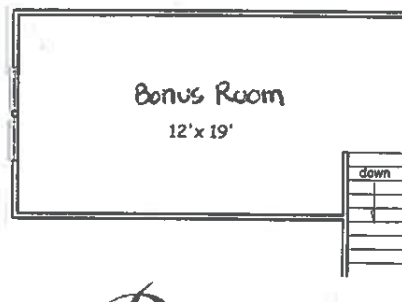
The Savannah 2700 Sq Ft



1st Floor



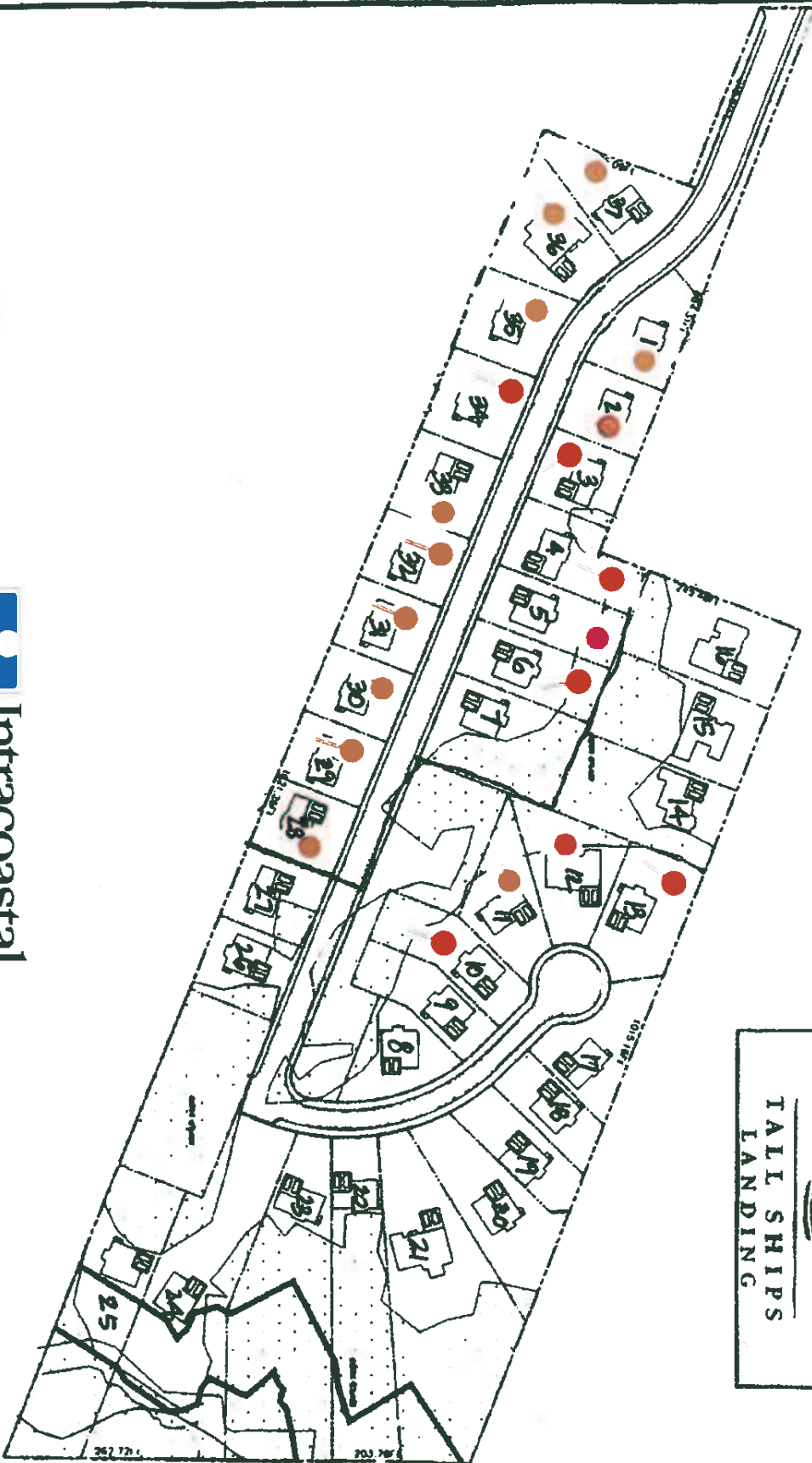
2nd Floor



BLANTON
Building Inc.

SOLD

**TALL SHIPS
LANDING**



Keith Beatty
NEWHOME
SALES & MARKETING



Intracoastal
REALTY CORPORATION
Experience the Exceptional